

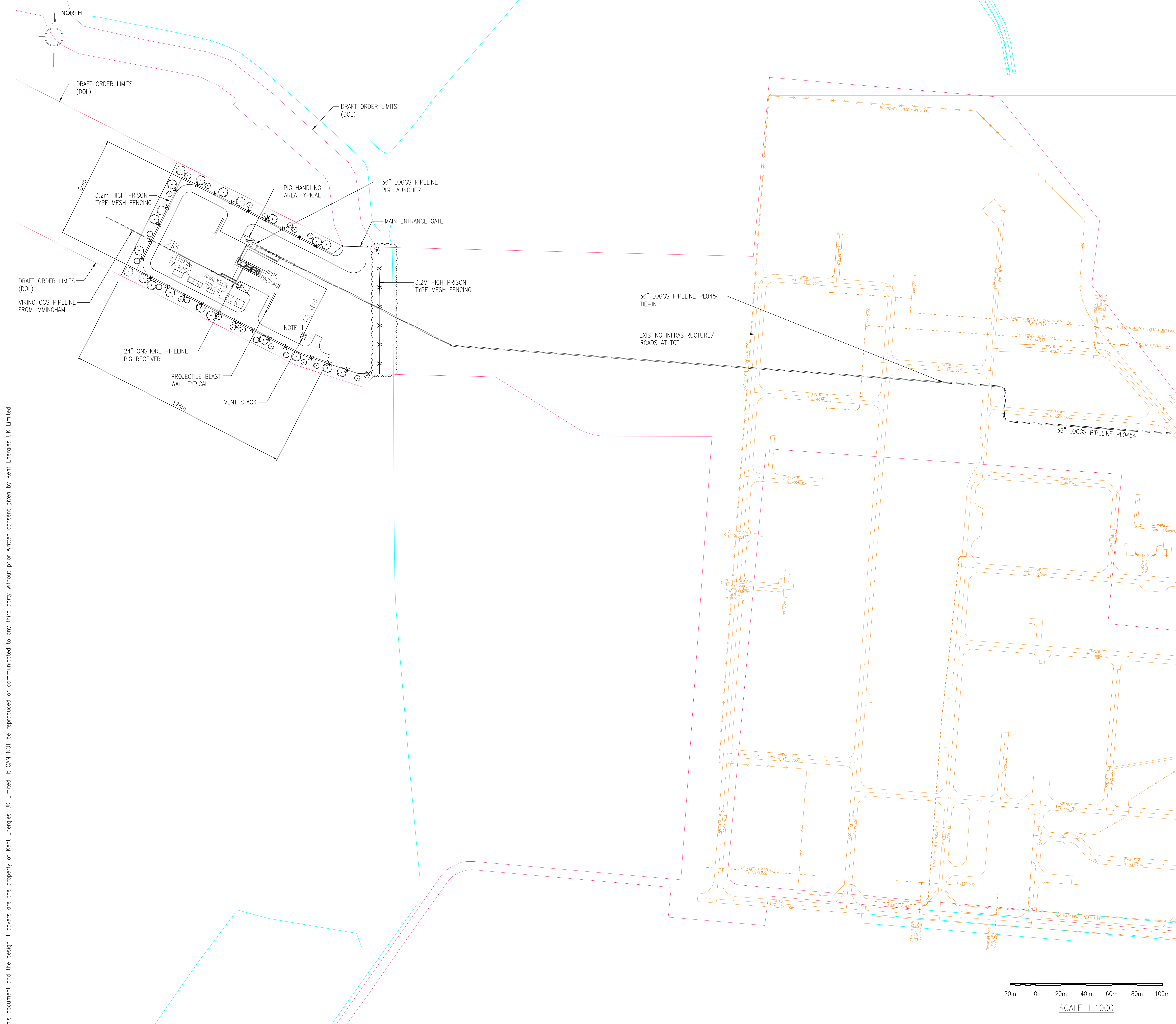


Viking CCS pipeline

4.8 Theddlethorpe Facilities Option 2, Plot Plan, Routing and Elevations

Document Reference: EN070008/APP/4.8

Applicant: Chrysaor Production (U.K.) Limited,
a Harbour Energy Company
PINS Reference: EN070008
Planning Act 2008 (as amended)
The Infrastructure Planning (Applications: Prescribed Forms
and Procedure) Regulations 2009 - Regulation 5(2)(o)
Date: October 2023



- NOTES:**
1. VENT STACK OPEN END TERMINATION ELEVATION = +25.0M ABOVE GRADE-NB. THE VENT WILL ONLY BE RAISED WHEN REQUIRED.
 2. EXISTING SITE ROADS SHOWN IN ORANGE.
 3. LER = LOCAL EQUIPMENT ROOM
 CCR = CENTRAL CONTROL ROOM
 HIPPS = HIGH INTEGRITY PRESSURE PROTECTION SYSTEM

This document and the design it covers are the property of Kent Energies UK Limited. It CAN NOT be reproduced or communicated to any third party without prior written consent given by Kent Energies UK Limited.

A2	24/08/2023	ISSUED FOR USE		RM	PH	PH	PH
A1	13/07/2023	ISSUED FOR COMMENT		RM	PH	PH	PH
REV.	DATE	REVISION DESCRIPTION		ORIG'D	CHK'D	REV'D	APP'D



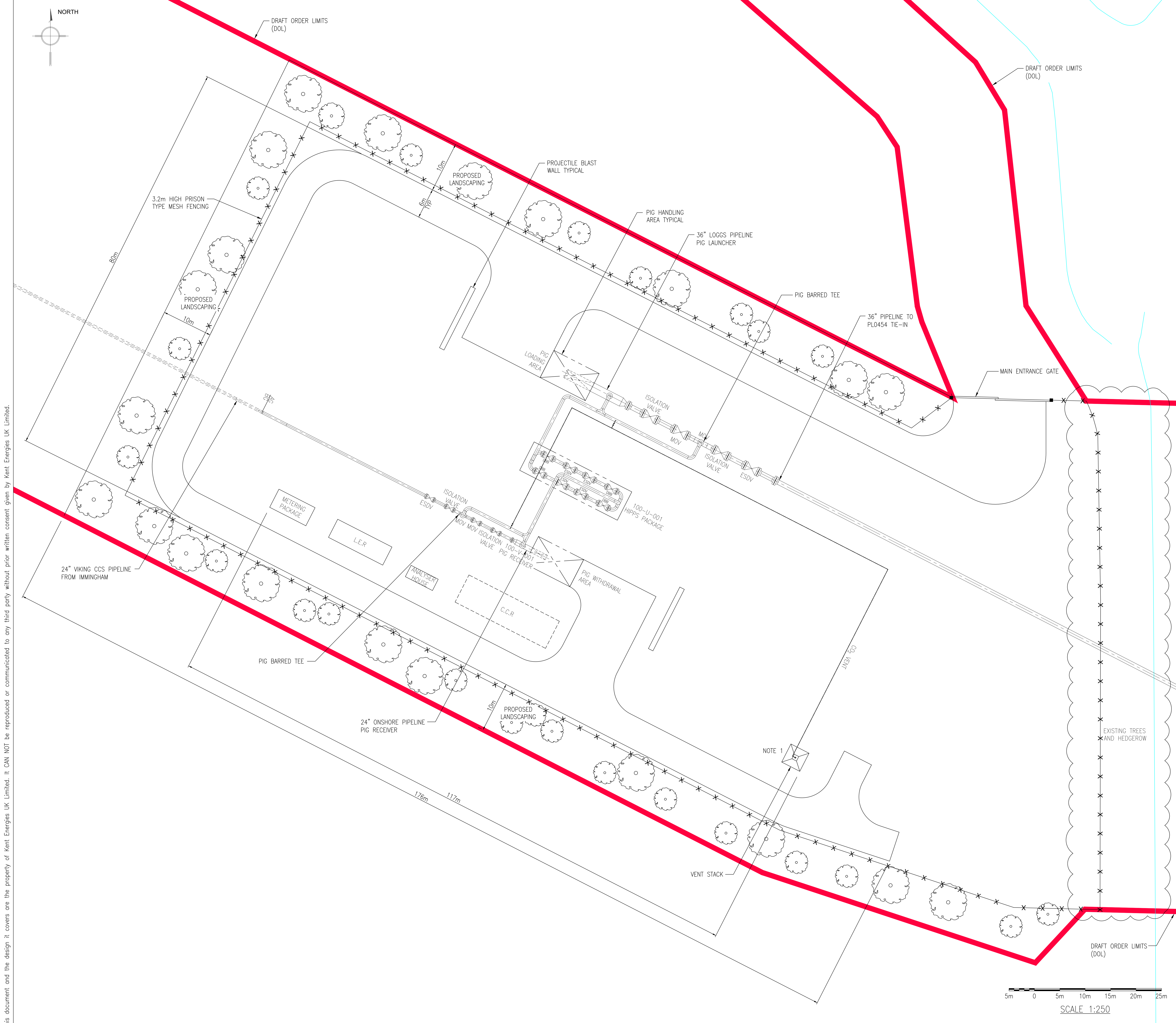
SCALE: 1:1000 ORIGINAL DRAWING SIZE: A0

PROJECT: VIKING CCS PIPELINE FEL-2

TITLE: THE THEDDLETHORPE FACILITY PLOT PLAN - OPTION 2

DCO APPLICATION DETAILS: VIKING CCS PIPELINE THEDDLETHORPE FACILITIES - PLOT PLAN OPTION 2 REGULATION 5.2 (O) APPLICATION DOCUMENT REFERENCE 4.8 SHEET 1 OF 3

CLIENT DRAWING NUMBER: KNT-UKOS-T-TGT-X-EN-30-00005-01 REV C1
 KENT DRAWING NUMBER: 5211584-215-PI-PLP-002 REV A2



- NOTES:**
- VENT STACK OPEN END TERMINATION ELEVATION = +25.0M ABOVE GRADE-NB. THE VENT WILL ONLY BE RAISED WHEN REQUIRED.
 - LER = LOCAL EQUIPMENT ROOM
CCR = CENTRAL CONTROL ROOM
HIPPS = HIGH INTEGRITY PRESSURE PROTECTION SYSTEM

This document and the design it covers are the property of Kent Energies UK Limited. It CAN NOT be reproduced or communicated to any third party without prior written consent given by Kent Energies UK Limited.

REV.	DATE	REVISION DESCRIPTION	ORIG'D	CHK'D	REV'D	APP'D
A2	24/08/2023	ISSUED FOR USE		RM	PH	PH
A1	13/07/2023	ISSUED FOR COMMENT		RM	PH	PH



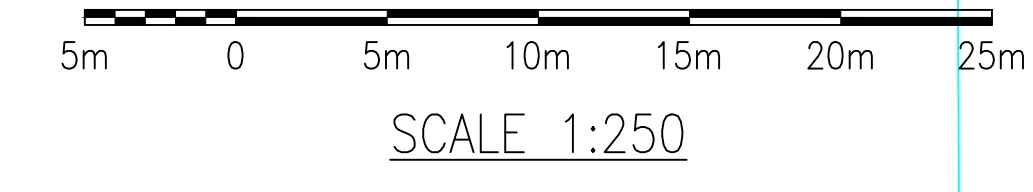
SCALE: 1:250 ORIGINAL DRAWING SIZE: A0

PROJECT: VIKING CCS PIPELINE FEL-2

TITLE: THE THEDDLETHORPE FACILITY PIPE ROUTING DRAWING - OPTION 2

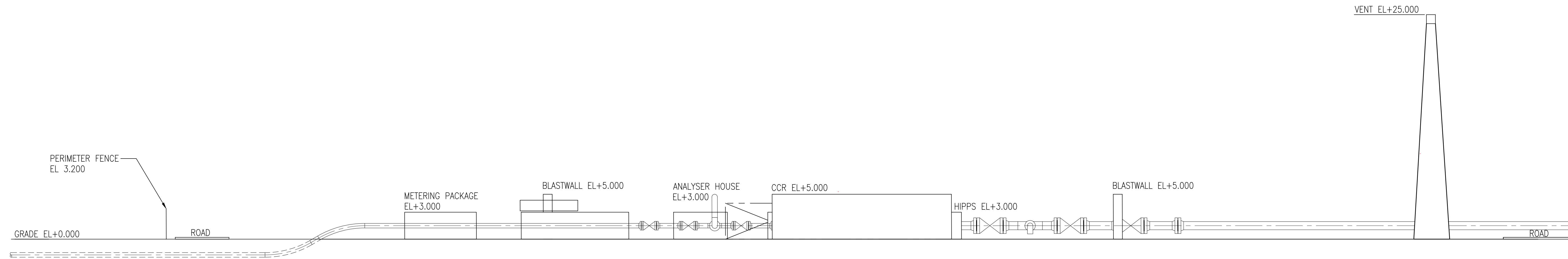
DCO APPLICATION DETAILS: VIKING CCS PIPELINE THEDDLETHORPE FACILITIES - PIPE ROUTING DRAWING OPTION 2 REGULATION 5.2 (O) APPLICATION DOCUMENT REFERENCE 4.8 SHEET 2 OF 3

CLIENT DRAWING NUMBER: KNT-UKOS-T-TGT-X-EN-19-00001-01 REV C1
KENT DRAWING NUMBER: 5211584-215-PI-DWG-004 REV A2

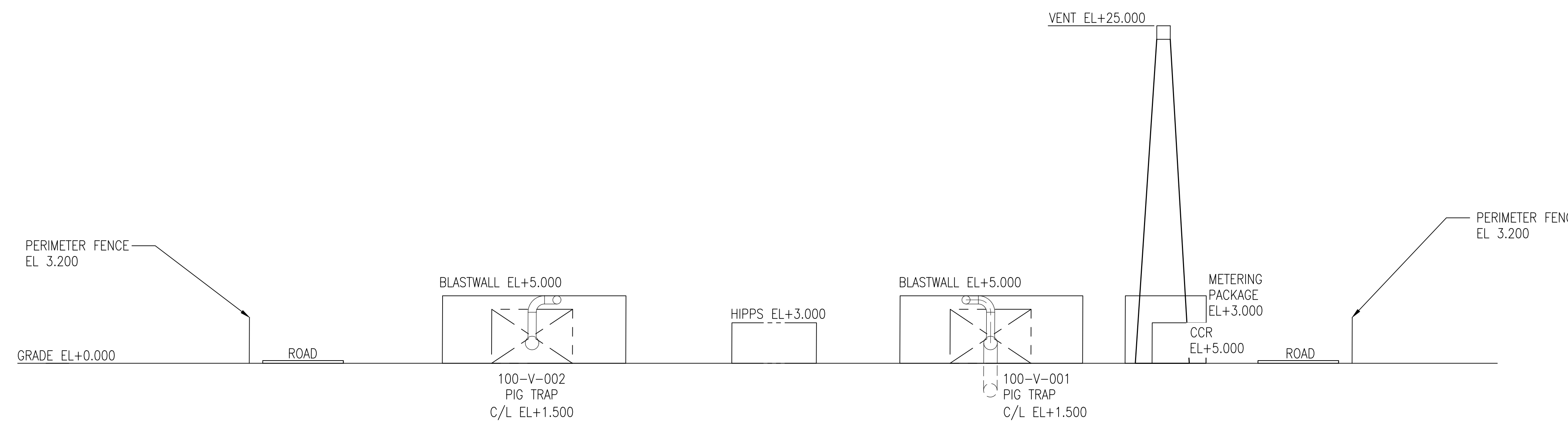


NOTES:

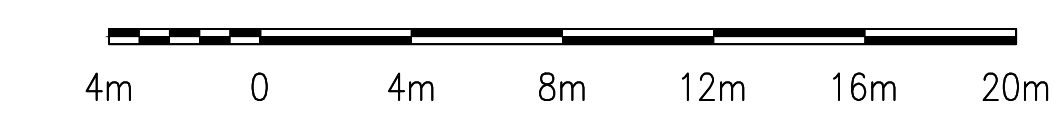
1. VENT STACK OPEN END TERMINATION ELEVATION = +25.0M ABOVE GRADE-NB. THE VENT WILL ONLY BE RAISED WHEN REQUIRED.
2. LER = LOCAL EQUIPMENT ROOM
CCR = CENTRAL CONTROL ROOM
HIPPS = HIGH INTEGRITY PRESSURE PROTECTION SYSTEM



ELEVATION LOOKING NORTH



ELEVATION LOOKING EAST



SCALE 1:200

REV.	DATE	REVISION DESCRIPTION	ORIG'D	CHK'D	REV'D	APP'D
A2	24/08/2023	ISSUED FOR USE	RM	PH	PH	PH
A1	13/07/2023	ISSUED FOR COMMENT	RM	PH	PH	PH



SCALE 1:200 ORIGINAL DRAWING SIZE A0

PROJECT VIKING CCS PIPELINE FEL-2

TITLE THE THEDDLETHORPE FACILITY NORTH & EAST ELEVATION - OPTION 2

DCO APPLICATION DETAILS: VIKING CCS PIPELINE THEDDLETHORPE FACILITIES - ELEVATION OPTION 2 REGULATION 5.2 (O) APPLICATION DOCUMENT REFERENCE 4.8 SHEET 3 OF 3

CLIENT DRAWING NUMBER: KNT-UKOS-T-TGT-X-EN-30-00004-01 Rev C1

KENT DRAWING NUMBER: 5211584-215-PI-DWG-003 REV A2